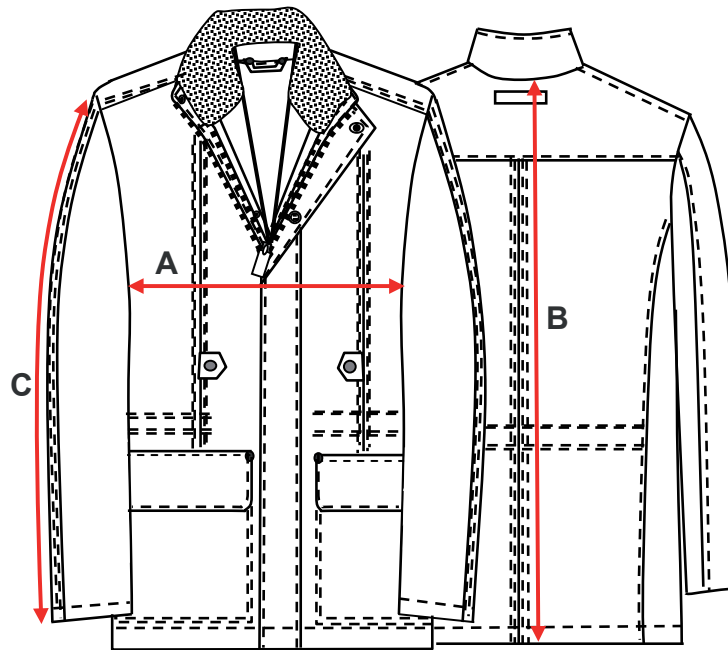


# HAFNIUM



## GUIDE DES TAILLES

### SPORTSWEAR



	<b>A</b>	<b>B</b>	<b>C</b>
TAILLE	1/2 TOUR DE POITRINE	LONGUEUR DOS	LONGUEUR MANCHE
<b>46</b>	57	78.5	65.5
<b>48</b>	59	79	66
<b>50</b>	61	79.5	66.5
<b>52</b>	63	80	67
<b>54</b>	65	80.5	67.5
<b>56</b>	67	81	68
<b>58</b>	69	81.5	68.5
<b>60</b>	71	82	69
<b>62</b>	73	82.5	69.5
<b>64</b>	75	83	70